

Historic, archived document

Do not assume content reflects current scientific knowledge, policies, or practices.



62
SB115
.Z9 B634
R

F. W. Belgiano & Co. Inc
Washington, D.C. 20002

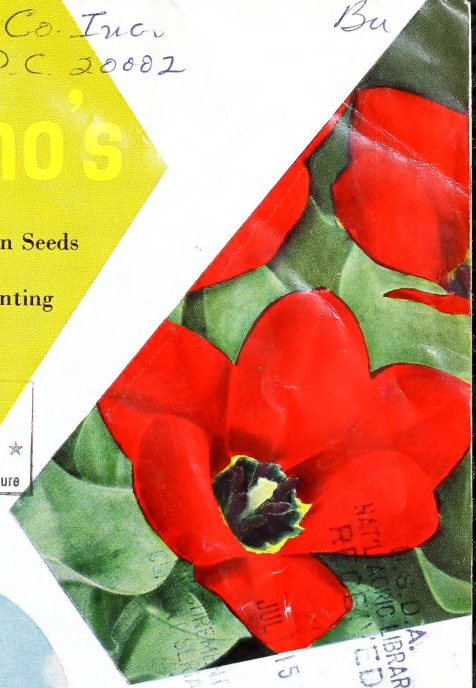
Bu

Bolgiano's

Bulbs, Plants and Lawn Seeds

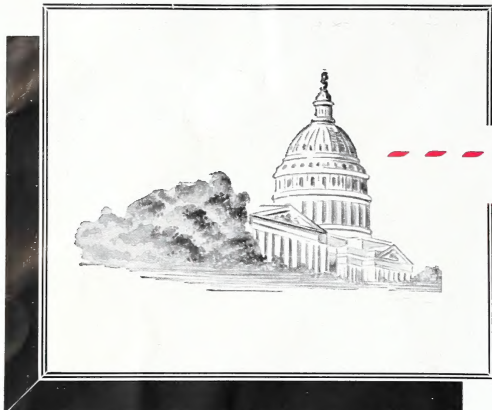
for Fall 1964 Planting

National Agricultural Library
RECEIVED
★ SEP 1 1964 ★
U. S. Department of Agriculture



75 Years
in the
Nations Capital

LIBRARY
RECEIVED
SEP 15 1965
U.S. DEPARTMENT OF AGRICULTURE
NATIONAL AGRICULTURAL LIBRARY



BOLGIANO'S *Capitol Park* *Lawn Grass Seed*

"The Nation's Pride!"

Truly a top-grade lawn mixture, containing a carefully selected, well-balanced blend of highest quality, re-cleaned seed to produce a fine lawn in the Washington, Maryland and Virginia area. Capitol Park Lawn Seed is the result of our 75 years' experience. It has been thoroughly tested and proved and will produce fine-bladed, deep-rooted grasses that are so necessary for a beautiful year-round turf.

CAPITOL PARK LAWN GRASS SEED	Lb.	\$1.00
	5 lbs.	4.75
	25 lbs.	21.95
	50 lbs.	39.95
	100 lbs.	79.50



OUR LAWN MIXTURES HAVE BEEN AWARDED THE LAWN INSTITUTE'S SEAL OF APPROVAL FOR THE WASHINGTON, MARYLAND AND VIRGINIA AREAS.

COVERAGE OF 5 LBS.: 1500 SQ. FT. FOR NEW LAWNS, 2500 SQ. FT. FOR OLD LAWNS.

Ask for Bolgiano's "Handy Guide to a Beautiful Lawn"

Use **PREMIER PEAT MOSS** for improving all types of soils

BOLGIANO'S WHITE HOUSE SHADY LAWN GRASS SEED

Washington is often called the "city of trees." Because of the shade they cast, these magnificent trees are frequently a cause of concern to home owners. But, thanks to Bolgiano's White House Shady Lawn Grass Seed, you can enjoy a beautiful turf in shady spots that will match the turf of our Capitol Park Lawn Grass in the sun. Through experimentation with grasses best adapted for growing in the shade in the Washington, Maryland and Virginia area, this formula was proved.

**Lb. \$1.00; 5 lbs. \$4.75;
25 lbs. \$21.95; 50 lbs. \$39.95; 100 lbs. \$79.50**

BOLGIANO'S PERMA-GREEN LAWN GRASS SEED

Another of our popular lawn grass seed mixtures is Perma-Green, an all-purpose blend of the finest Kentucky Blue, Merion Kentucky Blue, and Pennlawn Creeping Red Fescue grasses. This blend is capable of producing a dense, velvety lawn resistant to dry summer weather.

**Lb. \$1.35; 5 lbs. \$6.50;
25 lbs. \$29.50; 50 lbs. \$56.50**

MERION KENTUCKY BLUE GRASS. Accepted as a superior strain of Kentucky Blue Grass for use on lawns and turf. It has the characteristics of regular Kentucky Blue Grass plus the added advantage of sturdiness, drought and disease resistance. Lb. \$1.95; 10 lbs. \$19.00.

BOLGIANO'S DELUXE BLEND LAWN GRASS MIXTURE (55% Merion Formula). Contains sturdy Merion Kentucky Blue Grass with Pennlawn Fescue. These permanent grasses will give a long-lasting turf. Lb. \$1.75; 3 lbs. \$5.10; 10 lbs. \$16.50.

OTHER BOLGIANO LAWN GRASSES

- Ky. Blue Grass.** Lb. 85c.; 10 lbs. \$8.00.
- Highland Bent.** Lb. 90c.; 10 lbs. \$8.75.
- Penncross Bent.** Lb. \$4.25; 10 lbs. \$40.00.
- Pennlawn Creeping Red Fescue.** Lb. \$1.00; 10 lbs. \$9.50.
- Chewing Fescue.** Lb. 90c.; 10 lbs. \$8.50.

- Poa Trivialis.** Lb. 85c.; 10 lbs. \$8.00.
- White Clover.** Lb. \$1.25; 10 lbs. \$11.50.
- Ky. 31 Fescue.** Lb. 50c.; 10 lbs. \$4.75.
- Rye Grass, Annual.** Lb. 30c.; 10 lbs. \$2.75.
- Rye Grass, Perennial.** Lb. 35c.; 10 lbs. \$3.25.

ALL PRICES ARE SUBJECT TO CHANGE WITHOUT NOTICE

HOW TO ORDER . . .

For Free Delivery in D. C. and nearby Maryland and Virginia areas, phone Lincoln 7-4800 or National 8-0091.

Address All Mail to F. W. Bolgiano & Co., 411 New York Ave., N. E., Washington, D. C. 20002

F. W. BOLGIANO & CO., INC., warrants to the extent of the purchase price that, at the time of delivery, seeds or bulbs sold are as described on the container or on the tag attached thereto within recognized tolerances. We give no other or further warranty expressed or implied.

411 New York Ave., N.E., LI. 7-4800

1220 H St., N.W., NA. 8-0091

Use **PREMIER PEAT MOSS** for improving all types of soils

Make a parade of color in the Spring with

IMPORTED HOLLAND

Tulips

BOLGIANO'S MAY-FLOWERING TULIPS

TOP-SIZE BULBS

12 cm. and up in circumference, except where noted

Plant bulbs: 5 to 6 inches deep, 6 inches apart

Abraham Lincoln. Ideal Darwin. Bright crimson-maroon, outer petals shaded darker. Excellent substance. 3 for 45c.; \$1.75 per doz.; \$13.50 per 100.

Apeldoorn. Darwin Hybrid. Orange-scarlet; base black, edged yellow. Enormous flower. \$1.35 per doz.; \$10.25 per 100.

Aristocrat. Darwin. Soft purplish violet, edged white. \$1.50 per doz.; \$11.75 per 100.

Artist. Cottage. Outside purple and salmon-rose with green markings. A very unusual flower with pointed petals. 3 for 40c.; \$1.50 per doz.; \$11.75 per 100.

Cum Laude. Darwin. Dark campanula-violet color with slight silvery sheen at the edges. \$1.45 per doz.; \$11.25 per 100.

Dillenburg. Breeder. A lovely late-flowering orange-terra-cotta. \$1.35 per doz.; \$10.25 per 100.

Eclipse. Darwin. Striking crimson-maroon, blue base. \$1.50 per doz.; \$11.75 per 100.

General Eisenhower. Darwin Hybrid. Very large flower of brilliant scarlet. \$1.35 per doz.; \$10.25 per 100.

Glacier. Darwin. Pure white with ivory stamens. A tremendous, oval flower of excellent substance. Very long lasting, both in the garden and when cut. \$1.50 per doz.; \$11.75 per 100.

Golden Age. Darwin. A bright golden orange giant. \$1.50 per doz.; \$11.75 per 100.

Golden Harvest. Cottage. Globular, lemon-yellow. \$1.25 per doz.; \$9.25 per 100.

Holland's Glory. Darwin Hybrid. Warm dazzling scarlet. Very large and exceptionally long lasting. \$1.50 per doz.; \$11.75 per 100.

Insurpassable. Ideal Darwin. A Cattleya-colored Tulip—lilac-mauve ribbed white. Excellent substance. \$1.35 per doz.; \$10.25 per 100.

Ivory Glory. Cottage. Huge, creamy white, egg-shaped flower of perfect form, changing into snow-white when fully developed. We consider this variety superior to Zwanenburg. \$1.35 per doz.; \$10.25 per 100.

Mariette. Lily-flowered. Large flower of deep satin rose. \$1.50 per doz.; \$11.75 per 100.

Mrs. John T. Scheepers. Cottage. Yellow with fawn center. Large, deep cup. \$1.50 per doz.; \$11.75 per 100.

New Orleans. Darwin. Purple-lake. \$1.50 per doz.; \$11.75 per 100.

Pink Supreme. Darwin. Very fine clear pink. \$1.50 per doz.; \$11.75 per 100.

President Kennedy. Darwin Hybrid. Buttercup-yellow, spotted stone-red. 3 for 80c.; \$3.00 per doz.; \$24.00 per 100.

Pride of Zwanenburg. Darwin. Lovely bright pink. \$1.55 per doz.; \$12.00 per 100.

Princess Elizabeth. Darwin. Soft rosy pink; very beautiful. A good forcing variety. \$1.45 per doz.; \$11.25 per 100.

Queen of Sheba. Lily-flowered. Glowing brownish red, edged orange. \$1.50 per doz.; \$11.75 per 100.

Queen of the Night. Darwin. Large, purplish black. Bluish foliage. \$1.25 per doz.; \$9.25 per 100.



HOLLAND'S GLORY

Red Shine. Lily-flowered. Dazzling scarlet-red, very large. \$1.35 per doz.; \$10.25 per 100.

Scarlett O'Hara. Darwin. Bright geranium-red with a distinct black base edged yellow. A fine garden variety. \$1.50 per doz.; \$11.75 per 100.

Scotch Lassie. Darwin. Pure deep lavender with slightly reflexing petals. \$1.35 per doz.; \$10.25 per 100.

Spring Song. Darwin Hybrid. Bright red flushed satin rose. Tall, strong stems. \$1.25 per doz.; \$9.25 per 100.

Sweet Harmony. Darwin. Lemon-yellow edged silvery white. \$1.50 per doz.; \$11.75 per 100.

White Triumphant. Lily-flowered. Very large; pure white. The finest Lily-flowered Tulip in existence and absolutely unforgettable. Tall; comes back well for several years. Selected from our trials. \$1.35 per doz.; \$10.25 per 100.

May-flowering Mixture. Our own blend of top-size Holland Tulips. \$1.35 per doz.; \$10.25 per 100.

Bulb-Tone, made with an organic base high in bone meal, is especially formulated for feeding bulbs, rhizomes, corms and tubers. Apply Bulb-Tone at the rate of 1 lb. per 25 ft. of row. 2 lbs. 69c.; 5 lbs. \$1.19; 10 lbs. \$1.85.

MAY-FLOWERING TULIPS continued on page 4

BOLGIANO'S SPECIAL TULIP OFFERS

Special Darwin Mixture

50 LARGE-SIZE BULBS 11 to 12 cm. in circumference

All Colors Mixed **\$3.85** Per bag of 50

Rainbow Collection of Darwin Tulips

100 LARGE-SIZE BULBS 11 1/2 to 12 1/2 cm. in circumference

Contains 10 each of 10 varieties. **\$8.25** Per bag of 100
Selected and pre-packed in Holland.

TULIPS

May-flowering Double Tulips (Holland Grown)

Also known as Peony-flowered Tulips, because the very full blooms resemble peonies in shape. Very satisfactory. Height 16 to 22 inches. Plant 5 to 6 inches deep; 6 inches apart.

Eros. Clear rose color; very large and double. \$1.45 per doz.; \$11.25 per 100.

Gold Medal. Lovely deep yellow. \$1.45 per doz.; \$11.25 per 100.

Nizza. Sulphur-yellow with red stripes. \$1.45 per doz.; \$11.25 per 100.

Symphonia. Cherry-red. \$1.45 per doz.; \$11.25 per 100.

White Lady. A pure white. \$1.45 per doz.; \$11.25 per 100.

Double Early Tulips (Holland Grown)

Ideal for bedding and garden borders. Easy to force indoors. Height 11 to 14 inches. Plant 4 to 5 inches deep, 5 inches apart.

All Gold. Pure buttercup-yellow; large flowers. Good forcer. 3 for 45c.; \$1.75 per doz.; \$13.75 per 100.

Electra. Deep cherry-red. Broad, satiny petals. Very showy and distinct. 3 for 45c.; \$1.75 per doz.; \$13.75 per 100.

Peach Blossom. Deep rosy pink; deepening with age to a deep rose. 3 for 45c.; \$1.75 per doz.; \$13.75 per 100.

Schoonoord. Pure white. Fully double. 3 for 45c.; \$1.75 per doz.; \$13.75 per 100.

Single Early Tulips (Holland Grown)

Excellent for early spring color. Long-lasting; 10 to 14-inch stems. Also easily forced indoors. Plant 4 to 5 inches deep.

Bellona. Pure true yellow, long flower, very fragrant. \$1.45 per doz.; \$11.25 per 100.

Coloure Cardinal. Rich, glittering cardinal-red. 3 for 45c.; \$1.65 per doz.; \$12.60 per 100.

De Wet (Fireglow). Golden yellow flushed orange. \$1.45 per doz.; \$11.25 per 100.

White Hawk. Pure white. Fine for forcing and bedding. \$1.50 per doz.; \$11.75 per 100.

MAY-FLOWERING DOUBLE TULIPS



Tulip Species or Botanical Tulips (Holland Grown)

These Tulips are particularly adapted for rock garden or borders. They show their bright colors early in the season and have graceful recurving petals. For the most striking effects, plant in masses or clumps. Plant 4 inches deep, 5 inches apart except where noted. Bulb size varies from very small to 12 cm. up, depending on the variety.

RED EMPEROR. So large and brilliant as to be almost unbelievable.

The open blooms are up to 9 inches across! The color is dazzling vermillion-scarlet, with a black base bordered yellow. This is a spectacular Tulip that should be in every garden. Height 14 in. Plant 5 to 7 inches deep, 6 inches apart. Top-size bulbs, \$1.35 per doz.; \$10.50 per 100.

Chrysantha. A fine low-growing medium early Tulip only 6 inches tall. Yellow with cherry on outside of petals. 90c. per doz.; \$6.25 per 100.

Closiana (Lady or Candystick Tulip). (French Crown.) Outer petals cherry-red, inner petals creamy white with violet base. Very choice for massing in front of evergreens. 8 in. \$1.40 per doz.; \$10.75 per 100.

Greigii Bokhara. Deep orange-scarlet flowers. Leaves have a deep red edge. Height 18 in. 3 for 65c.; \$2.55 per doz.; \$20.00 per 100.

Greigii Red Riding Hood. An early-blooming scarlet with a black base and mottled leaves. 8 in. 3 for 50c.; \$1.85 per doz.; \$14.75 per 100.

Kaufmanniana. One of the earliest varieties, blooming early in April; color creamy white tinged carmine. Plant 5 to 6 inches deep, 6 inches apart. Height 7 in. \$1.35 per doz.; \$10.25 per 100.

Kaufmanniana Stresa. Red, edged yellow. Leaves mottled. Height 8 in. 3 for 45c.; \$1.75 per doz.; \$13.75 per 100.

Linifolia. Small, scarlet-vermillion flowers with narrow, undulated leaves. Height 6 in. \$1.40 per doz.; \$10.75 per 100.

Marioletti. Pretty little flowers of creamy white flaked with pink. 18 in. \$1.00 per doz.; \$7.75 per 100.

Turkestanica. Five to nine flowers on one stem. Creamy white with green and bronzy flush on the outside. Lasts very well. 8 in. \$1.25 per doz.; \$9.50 per 100.

White Emperor. Milky white flowers of remarkably large size. Long lasting and always fresh looking. Plant 5 to 6 inches deep, 6 inches apart. 3 for 45c.; \$1.75 per doz.; \$13.75 per 100.

Peacock Mixture. A valuable addition to the early rock garden. These are dwarf varieties with exotic coloring and variegated foliage. 3 for 45c.; \$1.65 per doz.; \$12.75 per 100.



BLUE PARROT

Parrot Tulips (Holland Grown)

The petals are curiously fringed on the edges and they are very peculiarly marked and feathered. The form and coloring of the flower is especially attractive. We list only the choicest varieties. Plant 5 to 6 inches deep.

Black Parrot. A most exotic flower. This purple-black Parrot is unique, strikingly tall and beautiful. \$1.50 per doz.; \$11.75 per 100.

Blue Parrot. Waved petals, clear violet-blue; very attractive. \$1.50 per doz.; \$11.75 per 100.

Fantasy. A beautiful warm pink that delights everyone. An outstanding rare variety. \$1.50 per doz.; \$11.75 per 100.

Orange Favorite. A magnificent deep rich orange throughout. \$1.50 per doz.; \$11.75 per 100.

Red Parrot. Raspberry-red. \$1.50 per doz.; \$11.75 per 100.

Texas Gold. Very large; golden yellow. Petals deeply fringed. \$1.50 per doz.; \$11.75 per 100.

White Parrot. Pure white. 3 for 60c.; \$2.25 per doz.; \$17.25 per 100.

KAUFMANNIANA



GREIGII RED RIDING HOOD

Daffodils for BEAUTIFUL SPRING FLOWERS

Grown in the State of Washington

No garden is complete without a liberal planting of Daffodils or Narcissus. Perfectly hardy, they grow and produce abundantly in almost any position, sun or shade, moist or dry. They are equally suited to pot-culture for winter flowering and are unsurpassed for naturalizing.

Note. The trumpet, crown, or cup is the center of the flower; the perianth is the surrounding row of petals or wings. (EE) Extra Early; (E) Early; (M) Midseason; (L) Late.

All Daffodils listed are top quality, double nosed No. 1's unless otherwise noted. Prices quoted include delivery in the Washington, D. C. metropolitan area.

For Parcel Post delivery charges, see page 2.

Plant bulbs 6 inches deep, 6 inches apart except where noted

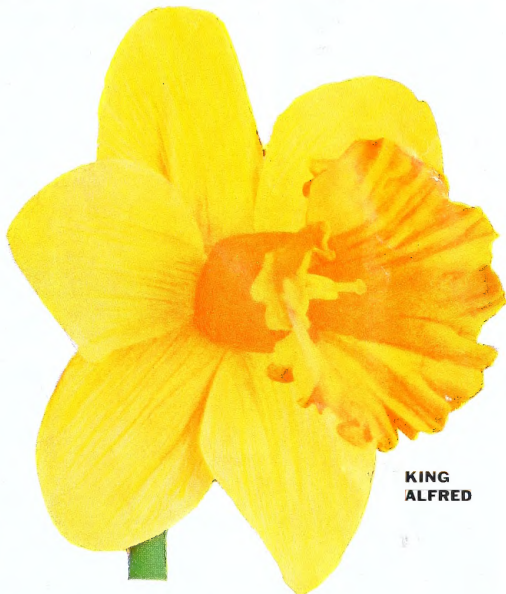
Bicolor Daffodils

Chula. A very tall, well-poised, early bicolor with a broad, flat perianth that frames a well-proportioned, fluted trumpet of rich cream-yellow with slightly darker rim. Very resistant to sun and weather. (E) 3 for 65c.; \$2.45 per doz.; \$19.25 per 100.

Yellow Trumpet Daffodils

King Alfred. The most popular Daffodil in the world, and one that even today holds its own against all comers in every flower market. Because of its large size, golden yellow color and informal, pleasing shape it has become the universal favorite. (M) 3 for 50c.; \$1.75 per doz.; \$13.75 per 100.

Rembrandt. Golden yellow throughout. Broad, well-closed perianth; bold, elegantly recurved trumpet. Excellent for forcing. 3 for 55c.; \$2.10 per doz.; \$16.25 per 100.



KING ALFRED

Large Cupped Daffodils

Duke of Windsor. Broad, white, overlapping perianth. Large, pale yellow cup, very short and flaring. 3 for 60c.; \$2.35 per doz.; \$18.50 per 100.

Fortune's Bowl. A good deep golden yellow perianth and deep orange-red, bowl-shaped cup. The finest of the Fortune seedlings. (E) 3 for 50c.; \$1.90 per doz.; \$14.75 per 100.

Mrs. R. O. Backhouse. This is the famous "Pink Daffodil." Fine informal perianth of ivory-white, and well-proportioned, long slim trumpet of apricot-pink, changing to shell-pink at the deeply fringed edge. Delicately beautiful but of exceptional substance; long lasting. A must for every garden. (E) 3 for 60c.; \$2.25 per doz.; \$17.75 per 100.

Pink Supreme. A tall, vigorous grower. Overlapping, pure white perianth and large fluted deep pink cup, white at the base. (M) 3 for 70c.; \$2.65 per doz.; \$21.25 per 100.

LARGE CUPPED DAFFODILS, continued

Red Bird. A large cup of fiery orange-scarlet, in sharp contrast to the well-rounded, pure white perianth. A leading variety of the newer introductions. (L) 3 for 50c.; \$1.80 per doz.; \$14.75 per 100.

Rustom Pasha. Large perianth of deep golden yellow, with rather long crown of deep solid orange-red. A large flower of intense color. (E) 3 for 55c.; \$2.10 per doz.; \$16.50 per 100.

Short Cupped Daffodils

April Showers. This is a lovely pure white, short cupped Daffodil with a large, broad perianth and a rather flat, expanded cup that opens lemon-yellow and bleaches to pure white. (M) 3 for 70c.; \$2.60 per doz.; \$20.50 per 100.

Sunshine. Large, snow-white perianth. The large, flat, lemon-yellow cup has a broad band of vivid orange. Very showy variety. 3 for 55c.; \$2.10 per doz.; \$16.25 per 100.

White Trumpet Daffodils

Beersheba. A magnificent flower with large, perfectly flat perianth; trumpet long and beautifully flanged at mouth. A flower of great size, measuring nearly 5 inches across. A vigorous grower and a grand exhibition variety. (M) 3 for 70c.; \$2.60 per doz.; \$20.75 per 100.

Mount Hood. An overlapping perianth of pure ivory-white, with a large, creamy white trumpet that changes to pure white when fully open. Heavily flanged at the trumpet mouth. (M) 3 for 70c.; \$2.65 per doz.; \$21.25 per 100.

GREEN THUMB GLOVES

New style gloves for the house and garden

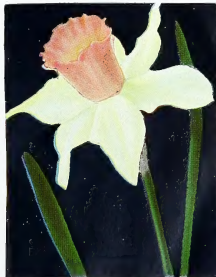
Chamois-colored, chamois-soft, vinyl-treated to keep out dirt. Long wearing, washable. Sizes: Large, Medium and Small. 98c. per pair.

FORTUNE'S BOWL

CHULA



MRS. R. O. BACKHOUSE



BEERSHEBA



FOR COLORFUL SPRING GARDENS—PLANT *Daffodils* THIS FALL



CHEERFULNESS



TWINK



THALIA

Double Narcissus

Cheerfulness. A very pleasing double white Poetaz with good stems. A fine garden and show flower. (L) 3 for 40c.; \$1.40 per doz.; \$10.50 per 100.

Twink. A splendid show flower that has created much interest whenever exhibited. It is a double of the semi-full type, the petals alternating soft primrose and clear orange, and so arranged as to give the flower a most attractive appearance. Forces easily. Early, free flowering and hardy. (E) 3 for 45c.; \$1.75 per doz.; \$13.50 per 100.

Yellow Cheerfulness. A beautiful double yellow late-flowering variety. 3 for 45c.; \$1.75 per doz.; \$13.50 per 100.

Triandrus Hybrids

Thalia. Beautiful clusters of two to three pure white flowers per stem. A lovely early variety, very suitable for rock gardens or for forcing. 3 for 50c.; \$1.85 per doz.; \$14.50 per 100.

Jonquilla Hybrids

Trevithian. The best of the short-crowned hybrid Jonquils. A fine, free-flowering variety, producing two or more pale lemon-yellow, sweet-scented blossoms per stem. 3 for 45c.; \$1.60 per doz.; \$12.50 per 100.

Tazetta Types (Bunch Flowered)

Geranium. One of the newer Dutch Tazetta hybrids with from five to seven large flowers per stem. The petals are rounded and overlapping; the short flat crown is orange-red. Outstanding in the garden and for exhibitions, and a good variety for late forcing. (L) 3 for 40c.; \$1.50 per doz.; \$11.50 per 100.

White or Colored Shell Chips for planting Narcissus Bulbs. Lb. 15c.; 10 lbs. \$1.45 (Not Postpaid).

Stone Pebbles for Planting Narcissus Bulbs. 3 lbs. 15c.; 10 lbs. 40c. (Not Postpaid).

ROOTONE

Reg. U. S. Pat. Off.

The Hormone Powder for Rooting Cuttings and for Dusting Seeds and Bulbs.

Trial size, 35c.; 2-oz. jar \$1.25; 1-lb. can \$5.00.

Bulbs for Indoor Culture

Paper-White Narcissus. Dishes of these, grown in pebbles and water, can be had in bloom continuously from Thanksgiving until Easter. 3 for 50c.; \$1.85 per doz.; \$14.50 per 100.

Grand Soleil d'Or. "Yellow Paper-White" with deep orange cup. Fragrant. Treat the same as the regular Paper-Whites. 3 for 75c.; \$2.75 per doz.; \$22.50 per 100.

Chinese Sacred Lily. Flowers in clusters very similar to those of the Paper-White Narcissus, but the cups within the petals are yellow. 3 for 50c.; \$1.85 per doz.; \$14.50 per 100.

Hole-in-One Planter

Bulb Planter and Plant Setter. This handy tool makes a hole in one operation. Merely cut the tool into the soil, remove it with a slight twisting motion and the soil comes with it, leaving a clean hole in which bulbs or plants may be set. \$1.00 ea.



The Jiffy Planting Tool

THE JIFFY PLANTER, which one can use in a standing position, is made of strong durable steel with a tubular steel "T" handle. It easily cuts a cylindrical hole up to 10 inches deep, depending on the pressure put on the angle foot bar. A slight twist and the tool draws out the soil, leaving an ideal hole for setting of bulbs and plants, and automatically pushes the soil from the cylinder with each succeeding insertion. \$3.25.



Neegards The Modern Knee-Protector

Neegards are an absolute necessity for men and women who do any work that requires kneeling on the ground. They are completely adjustable and form-fitting to fit any size knees. \$2.50 per pair.

pletely adjustable and form-fitting to fit any size knees. \$2.50 per pair.

NARCISSUS FOR NATURALIZING

A mixture of No. 1 bulbs, well assorted, in early and late varieties for naturalizing in masses or for mixed borders or among shrubbery. We recommend it strongly.

\$1.40 per doz.; \$10.75 per 100

Cyclamineus Hybrids

February Gold. An extremely early-blooming, small golden Daffodil with a rather star-shaped perianth. The trumpet is nicely fluted, straight, and shows a tinge of orange. A good forcing variety. 3 for 55c.; \$2.10 per doz.; \$16.50 per 100.

Poeticus Types

Actaea. The largest Poeticus in existence. Broad, snow-white perianth of great substance and good form; the very large eye is broadly margined with dark red. A most beautiful exhibition flower. (E) 3 for 45c.; \$1.60 per doz.; \$12.50 per 100.



Giant-Flowered HYACINTHS (Holland Grown)

Each variety listed is available in two sizes: First-size bulbs produce real exhibition blooms when planted in beds out-of-doors or forced in pots indoors. Bedding-size bulbs will produce fine blooms when planted out-of-doors in beds and along borders. Plant bulbs 6 inches deep, 6 inches apart.

Large exhibition forcing size, 18 to 19 cm. in circumference. 3 for 85c.; \$3.25 per doz.; \$26.50 per 100

Large bedding size, 15 to 16 cm. in circumference. 3 for 55c.; \$2.00 per doz.; \$15.50 per 100

Single Pure White

Carnegie. The very best white. A fine large truss of beautiful bells on a strong stem. Ideal for bedding and potting.

Single Red and Pink

Jan Bos. Brilliant carmine-red. One of the very finest red varieties for bedding and forcing.

Lady Derby. A pleasing shade of bright salmon-pink. Bears a perfect truss of bloom on an erect stem.

Marconi. Deep pink. Compact truss. Especially good for bedding and late forcing.

Single Dark and Light Blue

Delft Blue. Splendid spike of large bells of rich deep blue. Good for bedding and late forcing.

Porte Brillante. A fine light blue variety, excellent for early forcing. Large, broad truss.

Single Yellow

City of Haarlem. Beautiful large, compact, creamy yellow bloom of fine form and substance.

CLAY POTS—BULB PANS

For Forcing Bulbs

Write for prices

FOR INDOOR PLANTING

MULTIFLORA HYACINTHS. The gay colors and fragrance of these easily grown flowers make them ideal for indoor planting. May also be grown outdoors as they are perfectly hardy. Each bulb individually packed. Available in six colors. 69c. each; 3 for \$1.95, not postpaid.

HYACINTH GLASSES →

FOR GROWING HYACINTHS IN WATER

BLUE. \$1.98 each

CRYSTAL. \$1.35 each

YELLOW. \$1.98 each

RUBY. \$1.98 each

Use exhibition size bulbs as listed above.



Miscellaneous Bulbs

AMARYLLIS, Giant American Hybrids.

Amaryllis bulbs planted in October or November should come into bloom in March. Mixed colors only. Jumbo bulbs, suitable for planting in a 6-inch pot, 80c. each; 3 for \$2.25. (By mail, \$1.25 each.)

Separate Colors. (Holland grown.) Bright Red, Dark Red, White, Pink or Orange. Extra-large bulbs, \$4.95 each (by mail, \$5.35).

Hardy Amaryllis (*Lycoris squamigera*). (Domestic.) Strap-shaped leaves in spring, followed by clusters of pink lily-like blooms in August. Delightfully fragrant. Will grow in partial shade. 60c. each (by mail, 95c.).

ANEMONE (California Grown)

Blue Poppy. Violet-blue; black center.

His Excellency. Vivid scarlet with silvery white base and black center.

The Bride. Large, snow-white blooms.

Monarch De Caen, Mixed. Large, single flowers of blue, white and scarlet. Set bulbs 2 inches deep in cool, moist but well-drained soil. Spring is the best planting time in the North, fall in the South.

St. Brigid. Double-flowered mixture.

Any of above: \$1.15 per doz.; \$8.50 per 100

CHIONODOXA (Glory-of-the-Snow). (Holland grown.) Sky-blue flowers bloom soon after the snow is gone. 40c. per doz.; \$3.00 per 100.

CALLA LILIES (California Grown)

Black (*Arum pictum*). Green spathe, deep purple inside. Large bulbs, 90c. each; 3 for \$2.55.

Pink (*Zantedeschia Rebmanni*). The blooms are not large but their beautiful pink color makes them very desirable and unusual. Best for indoor culture. November delivery. 70c. each; 3 for \$2.00.

White (*Z. atropica*). Pure white. Pot bulbs in 6 to 8-inch pots when received. Large bulbs, 90c. each; 3 for \$2.55.

Yellow (*Z. Elliottiana*). Large, rich deep golden flowers often 4 to 5 inches across at the mouth. Leaves spotted with white. Ready in November. 70c. each; 3 for \$2.00.

CALLA LILIES



HARDY AMARYLLIS



AMARYLLIS, Giant Hybrids



MISCELLANEOUS BULBS

HOLLAND CROCUS

Spring-Flowering

Top-size bulbs, 9 cm. and up in circumference

One of the earliest of flowers to bloom in the spring. Crocus will grow in the lawn, in flower borders, on the slopes of terraces. Plant 2 to 3 inches deep.

Baron Von Brunow. Rich deep purple. 60c. per doz.; \$4.50 per 100.

Remembrance. Dark blue. 60c. per doz.; \$4.50 per 100.

Kathleen Parlow. White. 60c. per doz.; \$4.50 per 100.

Striped Beauty. 60c. per doz.; \$4.50 per 100.

Yellow. 60c. per doz.; \$4.50 per 100.

Special Crocus Mixture

Contains 100 large-size Crocus bulbs (8 to 9 cm. in circumference) in mixed colors, packed in a lithographed bag.

SPECIAL PRICE, \$3.50 per 100

SPECIES CROCUS

Spring-Flowering

E. P. Bowles. Dark yellow, feathered purple. 50c. per doz.; \$3.50 per 100.

Snow Bunting. Pure white with golden throat. Outside feathered purple. 50c. per doz.; \$3.75 per 100.

Vanguard. Very delicate blue. 55c. per doz.; \$4.00 per 100.

Autumn-Flowering

Plant Now—Bloom This Fall

Given a sheltered and sunny position in the rock garden, they add color at a time when most rock-garden plants are out of bloom.

Speciosus. Lilac-blue flowers with contrasting orange-red anthers. 50c. per doz.; \$3.25 per 100.

Zonatus. Rosy lilac with a yellow center surrounded by a bright orange zone. 50c. per doz.; \$3.25 per 100.

COLCHICUM autumnale major (Meadow Safricon). Autumn flowering. The rosy purple flowers resemble Crocus. Planted in August or September, the bulbs will soon flower, but foliage will not appear until spring. Will bloom, without soil or water, in a sunny window. 60c. each; 3 for \$1.50.

FREESIA. Produces large sprays of very fragrant flowers. Plant the bulbs in a mixture of loam and coarse sand, with a little bone meal.

White, Yellow, Blue, Lavender, Pink, Orange, Red or Mixed. 95c. per doz.; \$7.00 per 100.

FRITILLARIA meleagris (Snake's Head or Guinea-Hen Flower). Pendant, bell-shaped flowers oddly marked and checkered. 10 to 18 inches high. 60c. per doz.; \$4.50 per 100.

FRITILLARIA imperialis, Aurora (Crown Imperials). Very popular garden plants that like plenty of sunshine. Brilliant orange-red flowers on stems about 3 feet high. Bulbs, \$1.50 each; 3 for \$4.00

DUTCH IRIS. Place bulbs 4 to 6 inches deep in good sandy loam. Blooms in early June.

Imperator. Brilliant deep blue with a golden yellow blotch on each standard. 60c. per doz.; \$4.50 per 100.

Golden Harvest. Bright golden yellow. 60c. per doz.; \$4.50 per 100.

King Mauve. Orchid-lavender, very large flower. 75c. per doz.; \$3.50 per 100.

White Perfection. The finest white. 90c. per doz.; \$6.50 per 100.

IRIS reticulata. Rich pansy-violet. Blooms in very early spring. About 10 inches tall. 80c. per doz.; \$6.00 per 100.

Tingitana, Wedgwood. Graceful large flowers of a beautiful deep blue color. Very early. 90c. per doz.; \$6.50 per 100.

IXIA (African Corn Lily). Brilliant mixture. 50c. per doz.; \$3.50 per 100.

IXIOLIRION Pallasii. Easily grown in any sandy border. Flowers in late May or early June; produces deep blue, tubular flowers. Height 12 inches. 50c. per doz.; \$3.75 per 100.

LEUCOJUM vernum (Spring Snowflake). Strong stems bearing large clusters of pendent white flowers tipped with green. \$1.75 per doz.; \$9.00 per 100.

LYCORIS radiata. Bright red flowers in autumn. Plant indoors in the North. \$1.50 per doz. \$12.00 per 100.

MUSCARI, Heavenly Blue (Grape Hyacinth). Light blue flowers during April. 80c. per doz.; \$3.75 per 100.

Botryoides album. Pure white Grape Hyacinth. 60c. per doz.; \$4.50 per 100.

ORNITHOGALUM umbellatum (Star of Bethlehem). A dwarf hardy bulbous plant that produces umbels of white flowers shaded green in May. 45c. per doz.; \$3.00 per 100.

OXALIS. Suitable for pot-culture and winter blooming. Keep close to light to prevent foliage growing too long.

Bermuda Buttercup, Yellow, Grand Duchess, Lavender, Grand Duchess, White, Bowiei. Pink.

Each of above, 50c. per doz.; \$3.50 per 100

RANUNCULUS, Supreme Mixed. Large, turban-like heads of fully double flowers in a good range of color. Bulbs, \$1.35 per doz.; \$10.00 per 100.

SCILLA campanulata (Wood Hyacinth). Bears bell-like flowers on 15-inch spikes during early May.

Myosotis. Blue. 80c. per doz.; \$6.00 per 100.

Queen of the Pinks. 80c. per doz.; \$6.00 per 100.

White Triumphator. 80c. per doz.; \$6.00 per 100.

SCILLA sibirica, Spring Beauty. Exquisite rich blue flowers in early spring. \$1.25 per doz.; \$9.00 per 100.

SNOWDROPS. May be used effectively in the center or at the edge of a bed.

Single. Large, lovely single white bells. 75c. per doz.; \$5.50 per 100.

Double. Large, handsome double flowers. 85c. per doz.; \$7.00 per 100.

SPARAXIS. Similar to Freesia, but much harder and in a wide range of color combinations. 55c. per doz.; \$4.00 per 100.

TRITELEIA uniflora. Sweet-scented white flowers shaded blue. 45c. per doz.; \$2.75 per 100.

WINTER ACONITE (*Eranthis byemalis*). Golden blossoms look charming resting on an emerald-green cushion of leaves. 50c. per doz.; \$3.75 per 100.



CHIONODOXA



SPRING-FLOWERING CROCUS



SCILLA SIBIRICA, Spring Beauty



SCILLA →→→
CAMPANULATA

←←←
RANUNCULUS





ENCHANTMENT

Madonna (*Lilium candidum*). White. June blooming. French grown. 65c. each; 3 for \$1.85; \$7.00 per doz.

Speciosum Rubrum. White, tinted pink and heavily spotted red. \$1.00 each; 3 for \$2.50; \$9.00 per doz.

Croft. Write for prices.

Van de Graaff

WORLD-FAMOUS Lilies

Exotic - Colorful - Easy to Grow

These glorious Lilies were grown for you in Oregon on the slopes of lovely Mount Hood. Ready for delivery in October.

Auratum Platyphyllum . The Gold-Band Lily	\$2.00	\$5.00
Black Dragon . The inside of the flower is purest white; the outside is a rich purple-brown, margined white. Grows 6 feet high. July.	1.00	2.50
Destiny . A tall, cool purest lemon-yellow that is most attractive. June flowering.	1.00	2.50
Enchantment . An upright Lily of excellent habit, with many well-formed flowers of a vibrant nasturtium-red color. Full of life and depth, the color blazes in the sun and, even on dark days, the glow of Enchantment can be seen for miles.	1.00	2.50
Golden Clarion Strain . Dependable, vigorous golden flowers. Will thrive wherever Regale Lilies can be grown	1.50	4.00
Imperial Crimson . Height 5 to 7 feet. Color is white with crimson centers. Flowers in August	1.50	4.00
Imperial Gold . The petals are pure white, but heavily dotted with maroon spots and have a rich golden stripe down the center. 4 to 6 ft.	1.85	5.25
Imperial Silver . The color is a pure sunlit white heavily dotted with vermilion. Height 5 to 6 ft. Flowers in August	1.50	4.00
Pink Perfection Strain . Flowers are suffused a deep fuchsia-pink over the inner as well as the outer surface of the petals	1.50	4.00
Red Champion (Speciosum). A grand Lily for garden decoration, cut flowers or pot culture. Intensely rich, pink-spotted crimson red	1.25	3.50
Regale . White with a shading of lilac-pink on outside; sweet scented	75	2.00

OUR 75th Anniversary LILY COLLECTION

will give you flowers from June through August.

One each of the following five varieties (a \$6.50 value) for **\$5.50**

Black Dragon	Enchantment	Golden Clarion
Imperial Crimson	Pink Perfection	



Parker Scavenger LEAF CLEANER

Multi-purpose vacuum cleaner for picking up leaves, twigs and other debris in lawns and other areas. Bag supported between the handles for easy operation. 30 inch sweep, 3 HP. \$44.95.

Gold Tag Bone Meal. For bulb gardens, lawns and flowers. 100 lbs. \$7.95.

Compo. Turns compost into organic manure. 7½ lbs. \$1.25; 25 lbs. \$2.85.

Premier Brand Peat Moss. Large 7½ cu. ft. bale \$5.95.

Doom. Milky disease spore dust. Controls Japanese beetles in the soil. 10 ozs. \$3.75; 20 ozs. \$7.45.

Wizard Brand Sheep Manure; also **Wizard Brand Cow Manure**. Either, 25 lbs. \$1.75; 50 lbs. \$2.95; 100 lbs. \$5.75.

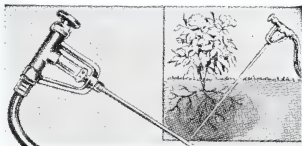
Bovung Cow Manure. 25 lbs. \$1.75; 50 lbs. \$2.95; 100 lbs. \$5.75.

RA-PID-GRO 23-21-17

RA-PID-GRO contains many elements and trace elements which plants require in order to produce good growth. RA-PID-GRO supplies them in very small amounts, so it should be fed regularly during the growing season. 6 ozs. 50c.; 8 ozs. 75c.; lb. \$1.30; 2 lbs. \$2.50; 5 lbs. \$4.75; 10 lbs. \$9.00; 25 lbs. \$22.50.

ROSS ROOT FEEDERS

The Key to Outdoor Beauty



The Ross Root Feeder puts the fertilizer and water directly to the roots. Especially fine for roses, shrubs and trees. \$6.98 complete with 12 cartridges. Additional cartridges, \$1.00 per doz.

Iron Cartridges, \$1.50 per doz.

Weedon Weed Killer. Contains the powerful 2,4-D and 2,4,5-TP, the two most effective systemic herbicides known. 8 ozs. \$1.00; pt. \$1.69; qt. \$2.75; gal. \$6.75.

BACCO MICHIGAN PEAT

An outstanding soil conditioner and mulch for lawns and planting of flowers and nursery stock. 4 cu. yd. pk. 98c.; 25 lbs. \$1.99; 50 lbs. \$2.29; 100 lbs. \$3.98.

REDWOOD PLANT TUBS

Made of the finest redwood, for long life. Octagon-shaped, with recessed brass bands.

10 in.	\$2.60
12 in.	3.90
14 in.	4.98
16 in.	6.75
18 in.	8.95

Coasters for Redwood Tubs. 12 in. (for 10 to 14 in. tubs) \$4.35; 14 in. (for 16 to 18-in. tubs) \$5.50.



WILT-PRUF

Spray on choice plants and evergreens. It forms a colorless film which retards moisture evaporation caused by cold winter winds. 8 ozs. \$1.49; qt. \$3.50; gal. \$10.75.

SPREADERS

For Fertilizer, Lime or Seed

These rugged and dependable Spreaders are made of heavy-gauge material with finger-tip control. The agitator distributes fertilizer or seeds in the correct amounts, accurately regulated by the feederside.



Salem. 18 in. Micro-Set... \$12.85
Salem. 23 in. Micro-Set... 21.00
Cyclone. Spreads 12 ft. ... 25.45

SPIKE DISC AERATOR

Will supply the proper kind of aeration and permit retention of moisture. Also useful before reseeded and top dressing. Seed and fertilizer reach into the knife-like cuts in the turf, safe from wind and rain. **No. 8**, \$21.00.

LIVING EARTH

A complete house plant soil. 3-qt. size 98c.

PERMA MULCH

Ground pine bark—Nature's way of mulching. Economical to use, retains moisture, does not wash away and assures better aeration of the soil. 3 cu. ft. \$2.69.

FLOWER-DRI PRESERVES FLOWERS PERMANENTLY!



Now you can enjoy the brilliant beauty of fresh flowers all winter long! FLOWER-DRI removes only the moisture from the flowers—does not affect their gorgeous colors or form.

Months later, they look as beautiful as if fresh from the garden. Keep roses, annuals, perennials, arrangements, corsages, etc. indefinitely. Easy, safe, fun. Anyone can do it. 1½-lb. can \$2.95; 5-lb. can \$6.95.

Free Blooming and Easy-to-Grow

TEN Beautiful IRIS

See page 11 for individual prices

THE FIVE ILLUSTRATED

- ① **Ranger.** Brilliant crimson-red.
- ② **Happy Birthday.** Gorgeous flamingo-pink.
- ③ **Her Grace.** Beautiful bicolor.
- ④ **Ola Kala.** Deep yellow, ruffled flowers.
- ⑤ **Lighthouse.** Old-rose with gold highlights.

COLLECTION F64-18
One each of the above five for \$3.00

THE FIVE NOT ILLUSTRATED

- Blue Rhythm.** Cornflower blue.
- Misty Gold.** Gold spangled lemon.
- Jake.** Glistening white; tall stems.
- Sable Night.** Very dark black-purple.
- Prairie Sunset.** Blend of pink, apricot and gold.

COLLECTION F64-19
One each of the above five for \$3.00

A BARGAIN IN Choice Mixed IRIS OF MANY VARIETIES

Assorted colors but not labeled
or kept separate

12 for \$3.00; 25 for \$5.00; 50 for \$9.50;
100 for \$18.00

COLLECTION F64-5

1 each of the 10 varieties

A Complete Color Range
each plant labeled

for Only \$5.00

SPRING AND FALL- BLOOMING IRIS

These are the varieties that bloom in spring and fall under favorable conditions.

- Any one variety** 75c. each; 3 for \$1.95; 6 for \$3.65; 12 for \$6.75
- Autumn Queen.** 1½ ft. Pure white. A sure bloomer in fall.
- Black Magic.** 2 ft. Intense deep violet-blue. Free blooming.
- Equinox.** Light blue.
- Sangreal.** 2 ft. Beautiful yellow; large.

MINIATURE BEARDED IRIS

These dainty little Iris bloom in April and early May.

Any one variety, 75c. each; 3 for \$1.95; 6 for \$3.65; 12 for \$6.75

- Fairy.** 6 in. Pale blue.
- La Fiancee.** 12 in. White.
- Prairie Gem.** 10 in. Yellow.
- Sambo.** 10 in. Deep blue.



Peonies

SINGLE PEONIES

- Ecstasy.** Exceedingly beautiful. Lovely satiny pink, lighted up by a soft yellow center. Very free blooming. \$2.25 each.
- Eva.** Brilliant coral-pink with yellow center. An unusual and attractive color. \$2.00 each.
- King of England.** Deep carmine. \$2.25 each.
- L'Étincelante.** Brilliant yet soft velvety carmine with a silver margin. Strong stems. Early. \$2.25 each.
- Mikado.** Deep crimson; stamens dark rose-red with golden edges. Large flowers. \$1.75 each.
- Mr. G. F. Hemerik.** Enormous, deep pink flower with two rows of petals. Late. \$2.25 each.
- Snow Wheel.** An outstanding variety. Large, well-formed flowers on stiff stems. Free-blooming, compact plant growth. The best single white for show in the garden and for cutting. The large, distinctive yellow center adds to its beauty. \$2.95 each.



1. KARL ROSENFELD 2. FESTIVA MAXIMA 3. MONS. JULES ELIE

DOUBLE PEONIES

The number following the name means the rating of the American Peony Society. (E) indicates earliest flowering varieties; (E-M) early to midseason; (M) midseason; (M-L) midseason to late; (L) latest blooming varieties.

- Baroness Schroeder.** 9.0 (M) Blush, turning to purest white; fragrant. \$1.50 each; 3 for \$4.00.
- Cornelia Shaylor.** 9.1 (L) Shell-pink. Fine-shaped flower. Outstanding. \$2.00 each; 3 for \$5.50.
- Festiva Maxima.** 9.3 (E) Fine white, with few crimson flecks. \$1.50 each; 3 for \$4.00; 12 for \$14.50.
- Inspecteur Lavergne.** 8.7 (E) Beautiful deep red. \$1.75 each; 3 for \$4.75.
- Karl Rosenfield.** 8.8 (M) Bright crimson. Free bloomer. One of the best deep reds for cutting. \$1.25 each; 3 for \$3.25; 12 for \$12.00.
- Lady Alexandra Duff.** 9.1 (E-M) Light pink, fading to white, touched with yellow and carmine. \$1.50 each; 3 for \$4.00; 12 for \$14.50.
- Le Cygne.** 9.9 (E) Finest pure white. The highest rated Peony. \$2.75 each; 3 for \$7.25.
- Mons. Jules Elie.** (E) Immense flower of fine pink. One of the best pinks for cutting. \$1.50 each; 3 for \$4.00; 12 for \$14.50.
- Mons. Martin Cahuzac.** 8.8 (E-M) Dark maroon-red. The darkest Peony. \$2.50 each; 3 for \$6.75.
- Primevere.** 8.6 (M) Light creamy yellow. \$1.75 each; 3 for \$4.75.
- Richard Carvel.** 8.8 (M) Brilliant crimson. \$1.50 each; 3 for \$4.00.
- Sarah Bernhardt.** 9.0 (L) Deep rose-pink, silver tipped; fragrant. Free bloomer; fine late cut flower. \$1.50 each; 3 for \$4.00; 12 for \$14.50.
- Therese.** 9.8 (E-M) Very large, pale, translucent old-rose-pink, paling toward the base. \$2.35 each; 2 for \$4.25.
- Walter Faxon.** 9.3 (M) Vivid shell-pink of luminous intensity. \$2.00 each; 3 for \$5.25.

SPECIAL! You may pick one each of any 3 of the above varieties for \$6.50; or any 6 for \$12.00



SINGLE PEONY L'ÉTINCELANTE

COLLECTION F64-1 3 Peonies Pictured above

Karl Rosenfield Festiva Maxima
Mons. Jules Elie
ALL THREE for only \$4.00

IRIS • Queen of Perennials

- Accent.** 36 in. Large clean yellow standards contrast most pleasantly with the rose-red falls. A noteworthy addition to the variegata class. \$1.00 each.
- Apricot Glory.** 36 in. Apricot-pink with a self colored beard and a slightly deeper coloring on the hafts. \$1.00 each.
- Arabi Pasha.** 36 in. Rich cornflower-blue. The coloring is accented by a blue beard. \$1.50 each.
- Argus Pheasant.** 36 in. Large flowers with broad, flaring falls and wide standards. A smooth, bright golden Argus-brown with self beard. \$1.00 each.
- Bazaar.** 36 in. Colorful as a Tunisian bazaar is this glorified version of Raspberry Ribbon with its broad falls and leathery substance. A free-blooming wine-colored plicata. \$1.50 each.
- Blue Sapphire.** 40 in. Large, ruffled, light blue. Dykes Medal, 1958. \$1.00 each.
- Cloud Cap.** 40 in. Largest of all the tangerine-bearded shell-pinks. \$1.00 each.
- Color Carnival.** 36 in. The ground color is a deep shade of pink in both standards and falls, with heavy markings of vivid purple on the falls. \$1.00 each.
- Copper Pink.** 3 ft. Soft pink flushed sparkling copper and dusted gold. 75c each.
- Elmhor.** 40 in. Rich red-mulberry. One of the largest of all. \$1.00 each.
- Extravaganza.** 36 in. An amoen with cream-white standards and rich velvety prune-plum falls. One of the last to bloom. 75c each.
- Frost and Flame.** 44 in. Largest and best of all red-bearded whites introduced to date. \$3.00 each.
- Gaylord.** 38 in. The white taffeta and violet combination of Wabash is here repeated, but in a flower much larger. Fine form and substance. \$1.00 each.
- Golden Russet.** 38 in. A beautiful Iris which the name well describes. 75c each.

- Golden Sunshine.** Outstanding clear soft yellow. Large blooms of excellent form. \$1.00 each.
- Happy Birthday.** 36 in. This new pink of good size is exquisitely ruffled and of fine substance. The color is a rich, clear pink, deeper than Cherie. \$1.00 each.
- Her Grace.** You will simply love its unusual beauty—radiant and regal! The ruffled standards are a lively shade of very light violet-blue, and the falls are deep violet-purple, surrounded with a very distinctive ermine-white border. The yellow beard and the white veins radiating on the upper part of the falls near the center of the flower add tremendously to its charm and beauty. It is also a very good grower and exceptionally good bloomer. A fascinating newer Iris. \$1.35 each; 2 for \$2.15.
- June Bride.** 30 in. Deep flamingo-pink with an odd buff-apricot undertone. Lovely flaring form. 75c each.
- Lighthouse.** 38 in. Standards are old-rose and the falls a shade of coppery red. It appears to be lighted from within. 75c each.
- Limelight.** 36 in. This lively new Iris is a blending of canary-yellow and greenish lemon. The well-formed flowers have a deep, lace, Chantilly-like edging. 75c each.
- Mary Randall.** 36 in. A smooth self of rich deep orchid or benzal-rose with a full tangerine beard. Broad petals and excellent form. \$1.50 each.
- Minnie Colquitt.** 36 in. Massive white plicata with a broad band of wine-purple stitching at the edges of the flaring falls, and the same color repeated in the standards. Both standards and falls are slightly ruffled. 75c each.
- Mulberry Rose.** 42 in. An imposing Iris that is really different—a self of radiant mulberry-rose. Large blooms, self colored. 75c each.
- New Snow.** 38 in. White as new snow. Large, ruffled, flaring falls and full, bright yellow beard. No haft markings. Delightfully crisp. One of the very best whites. 75c each.
- Pacemaker.** 36 in. Smooth, velvety red self. One of the best reds. Glossy sheen and good size. \$1.00 each.

Space does not permit us listing all the varieties of Iris we have available. Write or phone us for prices on any variety you may desire.

- Pierre Menard.** A magnificent rich blue. The slightly open standards are hyacinth-blue, the falls campanula-violet, with a canary-yellow beard as an effective fluff. Rich deep blue, one of the finest. 75c each.
- Pink Formal.** 38 in. A large, somewhat ruffled light pink. \$1.00 each.
- Pink Sensation.** 36 in. True delicate light pink, and sporting the famous tangerine or orange-red beard. Large flower. 75c each; 3 for \$2.00.
- Pinnacle.** 38 in. The standards are clear white, while the falls are primrose-yellow. 75c each.
- Pretender.** 35 in. Yellow and violet, a beautiful combination. 75c each.
- Rainbow Room.** 36 in. A handsome blend of yellow and all the rainbow colors. Accented with a blaze of blue at the center of the falls. 75c each.
- Ranger.** 36 in. Deep near crimson-red self. Bronze-orange beard on brownish haft. A fine Iris. 75c each.
- Sable Night.** 38 in. A sensational new black Iris. The flowers are large and full petaled with very heavy substance and a smooth finish. The smooth disk coloring is slightly undertoned purple-red. \$1.00 each.
- Solid Gold.** 38 in. Beautiful rich deep yellow self. The flowers are large and ideally formed. 75c each.
- Sunset Serenade.** Unique golden apricot. \$1.00 each.
- Tabu.** 38 in. An ebony-blue-black self; even the beard is virtually black. Petals are glossy and shine in the sun. \$1.00 each.
- Temple Belle.** 36 in. Apricot-yellow with no peachy undertone. The blooms are extra large, the falls flaring way out and then drooping gracefully with a slight ruffle. 75c each.
- Truly Yours.** 42 in. Combines bright yellow and light cream colors, with both standards and falls edged like Chantilly lace. \$1.00 each.
- Vatican Purple.** 36 in. Deep but bright blue-purple, silky in finish and heavy in texture. \$1.00 each.

Hardy Perennials

Unless otherwise noted, all plants are \$1.95 for 3 of one named variety; \$3.65 for 6 of one named variety; \$6.75 per doz. of one named variety. Single plants, 75c. each.

All Perennial plants are subject to the 3% Md. or D. C. Sales Tax. Please include in your remittance.

We pay postage, east of the Mississippi, on perennial and rose orders amounting to \$9.00 or more. On orders less than \$9.00, add 50c. for postage and packing.

PHLOX divaricata

Laphami. The ideal blue Phlox for early spring bloom. Excellent for planting with hardy candytuft or yellow and white tulips. Excellent in either sun or shade. Grows and spreads rapidly. 8 to 10 in. 85c. each; 3 for \$2.25; 6 for \$4.25; 12 for \$7.95.

PHLOX subulata (Moss or Mountain Pink)

Low spreading plants with attractive foliage cover themselves with a mass of tiny flowers in April and May. A leading rock-garden plant and desirable for wall gardening, or they can be used as edgings.

Pink Red White Blue

COLLECTION F64-4. 12 plants, 1 of each, for \$2.45.

COLLECTION F64-12. 4 plants, 3 of each, for \$6.25.

NEW PHLOX SUBULATA, Scarlet Flame

New. Strong grower of creeping habit, with rather large, brilliant crimson flowers which cover the entire plant. 85c. each; 3 for \$2.25; 6 for \$3.95.

CORONATION GOLD YARROW

(Achillea)

Large heads of bright yellow bloom, borne on sturdy stems from June to August. Fine for the garden and for cutting. 3 to 4 ft.

AQUILEGIA (Columbine)

One of the most valuable of the early-flowering perennials. They do best in light soil and thrive in semi-shade or full sun. 1 to 2 ft. May, June.

Mrs. Scott Elliott's Strain. Outstanding for its wide range of color.

DICENTRA (Bleeding Heart)

Spectabilis. Graceful pink, heart-shaped flowers on long, slender stems in April and May. 95c. each; 3 for \$2.50.

NEW PINK FAIRY BABYSBREATH

Gypsophila, Pink Fairy. New, large clear bright pink flowers, fully double. 18 inches high, with good spreading growth. Blooms from June to fall. Excellent to cut and makes a nice show in the garden. Similar in growth to Rosy Veil, but larger and pinker flowers and a little taller. 95c. each; 3 for \$2.50; 6 for \$4.50.

SINGLE PAINTED DAISIES

Robinson's Giant Hybrids. A fine strain with large flowers of various colors and shades. May, June. 2 ft., fine to cut.

MERTENSIA (Virginia Bluebells)

Virginica. The loveliest of all blue spring-flowering plants. Plant them in broad masses with daffodils. Sun or shade, 12 to 15 inches high. Strong roots to bloom next spring. 85c. each; 3 for \$2.25; 6 for \$4.25; 12 for \$7.50.

LILY-OF-THE-VALLEY (Convallaria)

Everybody knows and loves the little Lily-of-the-Valley. Will grow satisfactorily in average garden soil in either sun or shade. 6 for 75c.; 12 for \$1.35; 25 for \$2.35; 50 for \$4.35; 100 for \$8.00.

PINK LILY-OF-THE-VALLEY. Identical in every respect with the well-known white form, but soft pink in color. Deliciously fragrant, with airy grace. Makes lovely corsages and dainty arrangements. 85c. each; 3 for \$2.25; 6 for \$4.25.

FUNKIA (Hosta)

Honeybells. The loveliest Plantain-Lily, sweetly perfumed, with large, elegantly sleek leaves of olive-green. A godsend for shaded gardens, cool darkened corners. Splendid beside house or on difficult north side—hardy enough to endure for years. Each flower is a luscious trumpet of soft lavender-blue, artfully streaked, and creamy at base. Enticing fragrance like *Arbutus*. Three-foot spikes from late July through August. Prefers rich, well-drained soil. 95c. each; 3 for \$2.35; 6 for \$4.25.

ECHINOPS, Taplow Blue

Interesting and attractive globe-shaped flowers that will delight you. Long lasting when cut. Blooms intermittently from late June on, 4 feet tall. Very easy to grow; will live for years. Does best in sun. 85c. each; 3 for \$2.25.

IBERIS (Hardy Candytuft)

Delightful little evergreen plants much used in rock gardens. They make splendid border plants, furnishing closely packed, white bloom in spring.

Sempervirens. A fine plant with dark green foliage. White flowers.

Snowflake. Large, pure white flowers on dwarf plants.

RUSSELL LUPINS

Plant Lupins this fall to brighten your garden from May to July next year. They grow 2½ feet high with flower spikes 2 feet long, representing practically every color in the rainbow. They like a partially shaded location in rich, lime-free soil. Strong plants, sure to bloom. Mixed colors only. 85c. each; 3 for \$2.25; 6 for \$4.25.



ORIENTAL POPPY, WARLORD

A deep red Poppy. 95c. each; 3 for \$2.75.

ORIENTAL POPPIES

BRILLIANT GIGANTIC BLOOMS IN YOUR GARDEN
NEXT SPRING

Here are 6 specially selected new varieties to give you complete satisfaction. 2-year-old, field-grown plants, ready to bloom next spring

WARLORD. Deep red.
CARNIVAL. Bicolor white and red.
HELEN ELIZABETH. La France-pink.
RASPBERRY QUEEN. Crushed raspberry.
SALMON GLOW. Double salmon-pink.
WHITE FIELD MARSHALL. New white.

Your choice of the 6 varieties:
95c. each; any 3 for \$2.75

VERY SPECIAL
COLLECTION F64-6

One each of the 6 varieties, all labeled, for

\$5.00

GRAF-MELON (Daylily)

It's new • It's Different • It's beautiful!
A TRUE MELON COLOR

Easy to grow in sun or partial shade. It's a free bloomer and grows 3 to 4 feet high. The flowers are large, well formed and resistant to the hot sun. Blooms throughout July. Sold for \$10.00 each two years ago—Now at the very low price of \$2.00 each; 3 for \$5.00.

(These are large plants, ready to bloom. Don't miss this wonderful buy!)

PRIMULA Giant Hybrids

Large individual flowers in large heads often 4 to 6 inches across, borne on strong, 8 to 12-inch stems. Color range most varied, with many rare shades not found in ordinary strains. Hardy and easy to grow. Nice blooming size plants, 85c. each; 3 for \$2.25; SPECIAL, 6 for \$3.95.

Three Beautiful NEW VERONICAS

To Give Flowers All Summer

Icicle. New. A beautiful new pure white form of the subspecies type. Blooms nearly all summer. Healthy, strong grower of neat growth. Stiff, 18 to 24-in. spikes on compact plant.

Pink Spire. New. Best tall pink Veronica. Reaches 2 ft. in height with lengthy spikes of soft pink flowers dotted by red anthers.

Sunny Border Blue. Finest deep blue Veronica. Very compact in growth, only 18 inches high. Blooms from June on.

Any of the above 3 varieties, 85c. each; 3 of any one variety for \$2.25; 6 for \$4.25

SPECIAL OFFER F64-8
3 each of above 3 varieties \$5.95

for Fall Planting

GROUND COVERS

ENGLISH IVY. The fastest-growing ground cover. 2 1/4-in. pot plants, \$3.50 per doz.; \$25.00 per 100.

PACHYSANDRA (Japanese Spurge). A trailing plant, 6 to 8 inches high, forming a complete cover of bright, glossy green foliage and small spikes of flowers during May and June. \$3.50 per doz.; \$25.00 per 100.

VINCA minor (Periwinkle; Trailing Myrtle). An excellent dwarf trailing plant for carpeting the ground where it is too shady for other plants to thrive. \$3.50 per doz.; \$25.00 per 100.

Hardy Summer Phlox

Hardy Phlox is the backbone of your garden during the summer months when color is so much needed.

6 Beautiful Summer Phlox

Count Zeppelin. White with red eye.

Lilian. Cameo-pink with blue eye.

Elizabeth Arden. Soft pink with red eye.

White Admiral. Pure white.

Sir John Falstaff. Deep salmon-pink.

Charles Curtis (true). Deep red.

COLLECTION F64-10
1 each of the 6 for \$3.35

COLLECTION F64-11
2 each of the 6 for \$6.35

COLLECTION F64-13
3 each of the 6 for \$9.00

New Phlox, Orange

Distinctive salmon-orange. Compact grower, 18 inches high, free blooming from mid-July on. 95c. each; 3 for \$2.50; 6 for \$4.75.

Phlox Miss Lingard—the Favorite

Early-blooming white Phlox. Nice foliage and spectacular flower heads 2 1/2 to 3 ft. high. 85c. each; 3 for \$2.25; 6 for \$4.25; 12 for \$6.95.

Helleborus (Christmas Rose)

They grow best in rich soil and a shady location. Attractive the year round.

Niger. 1 ft. Single white blossoms flushed with pink on sturdy stems. December to March. \$1.50 each; 3 for \$4.00.

Orientalis atrorubens. Crimson-purple flowers on 12 to 15-inch stems. February to April. \$1.50 each; 3 for \$4.00.

Silver Mound Artemisia

A handsome, compact, mound-like plant about 8 inches high and 12 to 15 inches across. Fern-like foliage of light, bright silvery gray. Very pleasing in the rock garden or as an accent plant, but most distinctive for edging beds and walks. Prefers a warm, sunny, dry location. Hardy anywhere. 75c. each; 3 for \$1.95; 6 for \$3.65; 12 for \$6.75.



SILVER MOUND ARTEMISIA

Hemerocallis (Daylilies)

6 CHOICE DAYLILIES

Your choice \$1.00 ea.; any 6 for \$5.00

Gay Troubadour. A sparkling bicolor—Indian red and maize. June and July. 3 1/2 ft.

Honey Red Head. Bright orange-red with distinct cream-yellow border. July and August. 3 ft.

Pink Angel. Light pastel pink with a little yellow spot in the center. Unusual and very pretty. Elegant and free flowering. June and July. 2 ft.

Rose Du Barry. Unusual tone of strawberry-red. Outstanding. June and July.

Serenade. Unusual pastel tint of yellow and pink. June and July. 4 ft.

Waubun. Broad, recurving, twisty petals of soft cadmium-yellow with outer half flushed terra-cotta. June and July. 2 to 2 1/2 ft.

6 Outstanding New Daylilies

Your choice \$2.00 ea.; any 3 for \$5.00

Atlas. 3 to 3 1/2 ft. Huge, bold, light yellow with chartreuse overtones. This is about the finest large-flowered in this color class. Midseason.

Fairy Wings. 2 1/2 to 3 ft. Dainty, 5-inch blooms edged with tiny ruffles. Pale yellow with delicate pink glow and a cool green throat. Early.

Golden Wonder. 2 1/2 ft. Large, recurved, diamond-dusted golden yellow self. Remains open over twelve hours. Late.

Pink Orchid. 2 to 2 1/2 ft. Heavily ruffled, large flowers in shades of salmon, peach and shell-pink. Midrib and edges of sepals lavender. Yellow to green throat. Sun resistant. Midseason.

Splendor. 2 to 2 1/2 ft. Exciting large, widespread, full crimson-red self with 6-inch blooms on good scapes. The rich color runs deep, to meet a green-yellow throat and is sunfast. Late.

Violet Symphony. 2 to 2 1/2 ft. Pansy-purple with much lavender in its makeup. Green and green throat. Fast grower. Midseason.

Six Popular Daylilies

To give you bloom from May to September

85c. each; 3 of one variety for \$2.25;

6 for \$4.25; 12 for \$8.00; 25 for \$15.00.

August Pioneer. 2 1/2 ft. Small flowers of chrome-orange. Early August to mid-September.

Gypsy. Deep orange. Late June and July.

Hyperion. 3 ft. Still popular, pale yellow

double. Huge blooms, July to August.

Linda. 3 ft. Golden yellow, with cinnamon bars on each petal. July to August.

Mikado. 3 ft. Orange, marked purple-red. May to June.

Ophir. 3 1/2 ft. Huge blooms of rich golden yellow. July to August.

COLLECTION F64-3
1 each of the 6 for \$4.75

SEEDLING

Pansy Plants

Select Jumbo Mixture. The same famous blend that we have been selling for the past several years, with even more rare and beautiful colors added to produce the most gorgeous display of immense flowers of rare form and heavy substance. Set these seedling plants out this fall and enjoy them next spring and summer. Pansy plants are not available. 50 for \$1.65; \$3.10 per 100.

Late summer is the time to plant perennial and biennial flower seeds. See our large selection.



Planting of Phlox, Platycodon and Daylilies.

Platycodons are available in blue and pink.

DELPHINIUMS

Pacific Hybrids. The individual flowers are very large, often 2 1/2 inches across on spikes 3 to 4 feet long. Colors range from white, sky-blue to deep blue, purple, violet and exquisite shades of orchid-pink. The plants grow 5 to 7 feet tall. Cut the stems after the first great burst of bloom and they will repeat. They should be planted in masses at the rear of the hardy border in a sunny or partially shaded location. Full morning sun is preferred. 75c. each; 3 for \$1.95; 6 for \$3.65; 12 for \$6.75.

Separate Colors available in
Pink White Mauve Deep Blue
Light Blue

95c. each; any 3 for \$2.50; any 6 for \$4.50;
any 12 for \$8.50

The Easy-to-Grow Belladonna Type Delphinium

These have lovely single florets and grow 3 to 5 feet high.

Belladonna. Light blue.

Casa Bianca. New white variety. An outstanding new perennial.

Lamartine. Rich dark blue.



BOLGIANO'S *Newest and Best* ROSES for your Garden



CAMELOT

Mister Lincoln. Plant Pat. 2370, 1965 All-America winner. Deep rich red blooms are fully double and velvety. Strong, pleasant fragrance. Large and well-formed, they produce freely from spring to frost. The flowers come singly on long, strong stems, making them ideal for cutting. \$3.50 each; 3 for \$9.30.

Camelot. Plant Pat. 2371, 1965 All-America winner. Luminous coral-pink Rose with shimmering iridescence. Large buds open to blooms of 5 inches with spicy fragrance. Long stems make them ideal for cutting. \$3.50 each; 3 for \$9.30.

Saratoga. Plant Pat. 2299, This 1964 All-America winner is a beautiful pure white Floribunda. The blooms are gardenia-like in color and of unusually large size for this class—often 4½ inches across. They are produced in abundance and are just as nice for cutting as they are in the garden. Old Rose perfume is an added asset. Grows 2½ to 3 feet tall. \$2.50 each; 3 for \$6.60.

Granada. Plant Pat. 2214. A brilliant new 1964 All-America winner with spicy fragrance and a bouquet of colors—varying shades of scarlet, nasturtium-red and gleaming lemon-yellow. Long, urn-shaped buds and graceful blooms on strong stems that hold them high above the foliage. Dark green holly-like leaves. Tall and strong growing. \$3.50 each; 3 for \$9.30.

NEW GRANDIFLORAS

Golden Girl. Plant Pat. 1912. Double, high-centered flowers of sparkling golden yellow. Pointed buds and large blooms. An upright, sturdy plant of bushy habit, blooming very freely. \$2.50 each; 3 for \$6.60.

John S. Armstrong. Plant Pat. 2056. Brilliant deep red. \$3.50 each; 3 for \$9.30.

Montezuma. Plant Pat. 1383. Long slender buds and large blooms of a rosy salmon color. A good cutting Rose with long stems. \$2.75 each; 3 for \$7.20.

Mt. Shasta. Plant Pat. 2132. New white Grandiflora. \$3.00 each; 3 for \$7.95.

Queen Elizabeth. Plant Pat. 1259. Beautiful pink blooms carried upright on a proud, tall plant. Ruffled petals. \$2.50 each; 3 for \$6.60.

Starfire. Plant Pat. 1742. Non-fading currant-red, very luminous and velvety. Blooms both singly and in clusters. Tall plant with glossy, holly-like foliage. \$2.90 each; 3 for \$6.60.

SPECIAL COLLECTION F64-14

**6 All-America
Winners 1963-65**

**Granada
Saratoga
Tropicana
Royal Highness
Mr. Lincoln
Camelot**

Only \$17.65

MISTER LINCOLN

Tropicana. Plant Pat. 1969. You've heard and read about this wonderful new All-America winner for 1963—and here it is! The color is intense, glowing orange-red, certain to be a stand-out in any planting. Large, well-shaped flowers, long lasting and fragrant too. Plenty of healthy foliage on a tall, vigorous plant. \$3.50 each; 3 for \$9.30.

Royal Highness. Plant Pat. 2032. And this is the other All-America Rose for 1963—completely different from Tropicana but just as elegant in its way. The superb flower has plenty of petals to give firm, high-pointed form. In color it is the most delicate and lady-like soft pink you can imagine. Besides, it has a pronounced fragrance. Glossy dark foliage on a very good plant. Strong stems hold the blooms upright. \$3.50 each; 3 for \$9.30.

HYBRID TEA ROSES

Blanche Mallerin. Outstanding white. \$1.50 each.
Candy Stripe. Plant Pat. 2278. Dusty pink striped and streaked off-white. \$2.75 each; 3 for \$7.20.

Chicago Peace. Plant Pat. 2037. Pink with yellow tones. Fragrant. \$3.00 each; 3 for \$7.95.

Christian Dior. Plant Pat. 1943. Brilliant crimson with scarlet overtones. \$3.00 each; 3 for \$7.95.

Chrysler Imperial. Plant Pat. 1167. Vivid crimson-red. \$2.50 each; 3 for \$6.60.

Condesa de Sastago. Scarlet and yellow. \$1.50 ea.
Crimson Glory. Deep crimson-red. \$1.50 each.

Duet. Plant Pat. 1903. Soft salmon-pink with rich crimson reverse. Vigorous, free branching and fine for cutting. \$3.00 each; 3 for \$7.95.

Garden Party. Plant Pat. 1943. Cream and ivory, tinted soft pink. Large, fully double. Vigorous and free blooming. \$3.00 each; 3 for \$7.95.

Helen Traubel. Plant Pat. 1028. Lively pink. \$2.75 each; 3 for \$7.20.

K. A. Viktoria. Cream-white; fragrant. \$1.50 ea.
King's Ransom. Plant Pat. 2103. Vivid yellow, big petaled blooms. \$3.50 each; 3 for \$9.30.

Kordes Perfecta. Plant Pat. 1604. Cream-white, edged carmine. \$2.50 each; 3 for \$6.60.

Mirandy. Maroon-red. \$1.50 each.
Mojave. Plant Pat. 1176. Beautiful orange. \$2.75 each; 3 for \$7.20.

Nocturne. Plant Pat. 713. Rich red with enticing fragrance. \$2.25 each; 3 for \$6.60.

Paramount. Plant Pat. 984. Fragrant; orange-salmon color. Vigorous. \$2.00 each; 3 for \$5.25.

Peace. Favorite yellow Rose. \$1.95 each.
Pink Peace. Plant Pat. 1759. Deep dusty pink. Very large. \$2.75 each; 3 for \$7.20.

President Herbert Hoover. Two-tone rose and orange. \$1.50 each.

Radiance. Popular pink. \$1.50 each.
Red Radiance. Rose-red. \$1.50 each.

Simone. Plant Pat. 1842. Very large. Clear lilac-lavender. \$3.00 each; 3 for \$7.95.

Suspense. Plant Pat. 1944. Rich red petals with yellow undercolor. \$3.00 each; 3 for \$7.95.

Sutter's Gold. Plant Pat. 885. Bright yellow shaded orange. \$2.75 each; 3 for \$7.20.

Tiffany. Plant Pat. 1404. Pileus-pink. Exquisite for cutting. \$2.75 each; 3 for \$7.20.

White Knight. Plant Pat. 1359. Pure satiny white. \$2.75 each; 3 for \$7.20.



GRANADA

POPULAR

REPEAT-BLOOMING ROSES

Condesa de Sastago. Red and yellow.
Crimson Glory. Deep crimson; fragrant.
K. A. Viktoria. Double white.
Paramount. Orange-salmon.
Peace. Finest yellow.
President Herbert Hoover. Semi-double, rose and orange.

6 for only \$9.50

ASK FOR COLLECTION F64-17

FLORIBUNDA ROSES

Circus. Plant Pat. 1382. Rich yellow and red to orange-buff suffused pink. \$2.50 each; 3 for \$6.60.

Fashion. Plant Pat. 789. Coral-pink suffused with gold. \$2.00 each; 3 for \$5.25.

Fire King. Plant Pat. 1728. A tall plant. Double, brilliant vermillion. \$2.00 each; 3 for \$5.25.

Garnette. Garnet-red "sweetheart" flowers. \$1.50 each.

Gold Cup. Plant Pat. 1683. Deep yellow. \$2.00 each; 3 for \$5.25.

Golden Slippers. Plant Pat. 2244. Lovely blend of gold and orange. \$2.50 each; 3 for \$6.60.

Red Pinocchio. Plant Pat. 812. Rich carmine. \$1.75 each; 3 for \$4.65.

Spartan. Plant Pat. 1397. Orange-red, changing to reddish coral. \$2.00 each; 3 for \$5.25.

CLIMBING ROSES

Blaze, Improved. Huge clusters of vivid scarlet. \$1.50 each.

Coral Dawn. Plant Pat. 1117. A very good ever-blooming pink. \$2.75 each; 3 for \$7.20.

Climbing Crimson Glory. Plant Pat. 736. Deep velvety crimson. \$2.75 each; 3 for \$7.20.

Climbing Peace. Plant Pat. 932. Color and characteristics same as Hybrid Tea. \$2.50 each; 3 for \$6.60.

Golden Showers. Plant Pat. 1557. Canary-yellow blooms. \$2.50 each; 3 for \$6.60.



PRIVET LUCIDUM

Hardy Flowering SHRUBS

- ALMOND, Flowering.** Double pink flowers in early spring. 18 to 24 in., \$2.50 each.
- BEAUTY-BUSH.** Long, arching branches with pink flowers in spring. 2 to 3 ft., \$2.50 each.
- DEUTZIA crenata rosea.** 6 to 8 ft. Double pink with abundance of bloom in June. 2 to 3 ft., \$2.50 each. 3 to 4 ft., \$3.50.
- DWARF BURNING BUSH** (*Euonymus alatus compactus*). 4 to 5 ft. Has attractive corky bark. Fall foliage turns bright red. 2 to 3 ft., \$3.50 each.
- FORSYTHIA intermedia spectabilis** (Golden Bell). Strong, erect habit. 2 to 3 ft., \$2.50 each. 3 to 4 ft., \$3.25.
- Lynwood Gold.** Golden yellow flowers on erect branches. A good bloomer. 2 to 3 ft., \$2.50 each.
- HYDRANGEA, Otaksa.** Blue or pink, depending on soil acidity. 2-year-old clumps, \$3.00 each.
- Peege.** The old-time variety. 2 to 3 ft., \$2.50 each.
- LILAC, Old-fashioned Purple.** 2 to 3 ft., \$3.50 each.
- French Hybrids.**

Violet-red.	White.
Red-purple.	Light Blue.
- Above 4 varieties,
18 to 24 in., \$3.50 each; 2 to 3 ft., \$5.00
- MOCK-ORANGE** (*Philadelphus virginicus*). Fragrant white flowers, May and June. 3 to 4 ft., \$3.50 each.
- SNOWBALL tomentosum plicatum.** 6 to 8 ft. Showy white flowers in June with purple autumn coloring. 3 to 4 ft., \$4.00 each.
- SPIRÆA, Anthony Waterer.** Crimson flowers all summer. Dwarf. 15 to 18 in., \$2.75 each.
- Vanhouttei.** The most showy white variety. May, June. 2 to 3 ft., \$2.75 each.
- VIBURNUM setigerum.** Strong shrub with clusters of bright red berries that remain until early winter. 3 to 4 ft., \$3.50 each.
- WEIGELA rosea.** Pink flowers in May or June. 2 to 3 ft., \$3.50 each.
- Eva Rathke.** Vigorous red Weigela growing 5 to 6 ft. tall. Very hardy. 2 to 3 ft., \$3.75 each. 3 to 4 ft., \$5.00.

DWARF EVERGREENS

- ARBORVITÆ, Globe.** Globes of dense, light green foliage. 12 to 15 in., \$3.00 each.
- BIOTA** (*Aurea nana*). Grow 4 to 5 feet tall. Pyramidal and compact in form; golden yellow in spring, turning reddish brown in winter. For edging and formal planting. 15 to 18 in., \$4.00 each.

SPREADING EVERGREENS

- JUNIPERUS chinensis Hetzi.** Resembles Pfitzer Juniper. Fast-growing blue-green foliage; can be sheared. 15 to 18 in., \$4.00 each.
- YEW, Spreading** (*Taxus cuspidata*). Moderately bushy. Short dark green foliage. 15 to 18 in., \$4.50 each.
- YEW, Dwarf Spreading** (*Taxus cuspidata nana*). Ultimate height 2 to 3 ft. Well suited to small properties. 15 to 18 in., \$5.00 each.

WASHINGTON, D. C.

TALL EVERGREENS

- ARBORVITÆ, American Nigra.** Symmetrical in form and dark green in color. The best of the taller Arborvitæ. Very compact; rapid grower. 2½ to 3 ft., \$4.00 each. 3½ to 4 ft., \$6.00.
- CEDAR, Deodar.** Tall, pyramidal tree of bluish green. A rapid grower, not hardy in far north. 24 to 30 in., \$6.00 each.
- HENLOCK.** Best evergreen for shade. Rich deep green foliage. Can be used to make a beautiful hedge. 18 to 24 in., \$4.00 each. 2 to 3 ft., \$5.75.
- JUNIPERUS excelsa stricta** (Greek Juniper). A pyramidal Juniper with dense, gray-green foliage. 3 to 3½ ft., \$6.00 each.
- SPRUCE, Colorado.** Silvery green foliage. Tall grower. 24 to 30 in., \$6.00 each.
- Glauca densata** (Black Hills Spruce). Silvery foliage. More compact than Norway Spruce. Very shapely. 2 to 2½ ft., \$6.00 each.
- YEW, Upright** (*Trichostema Hicksii*). Symmetrical shape. Brilliant scarlet berries. 15 to 18 in., \$5.00 each.

BROAD-LEAVED EVERGREEN SHRUBS

- ABELIA grandiflora** (Bush Arbutus). Leaves dark green and glossy. Flowers white, tinted with pink. 2 to 3 ft., \$4.50 each.
- AZALEA, Hinodgiri.** Low-growing. Scarlet flowers; evergreen leaves. 4 to 6 in., 89c. 10 to 12 in., \$3.25. 12 to 15 in., \$4.25. (All sizes indicate spread).
- Kurume, Coral Bells.** Clear pink. 4 to 6 in., 89c. each. 10 to 12 in., \$3.25. 12 to 15 in., \$4.25.
- Snow.** Pure white. 4 to 6 in., 89c. each. 10 to 12 in., \$3.25. 12 to 15 in., \$4.25.
- BOXWOOD, Old English** (*Buxus suffruticosa*). Slow-growing. For edging or borders. 4 to 6 in., 79c. each (bare root). 8 to 10 in., \$3.00 (B&B).
- ILEX cornuta Burfordi** (Chinese Holly). A shrub to 10 feet tall. Lustrous dark green leaves, always beautiful. Its large, bright red berries are most effective. 15 to 18 in., \$3.50 each. 18 to 24 in., \$5.50.
- Crenata convexa.** Small convex-shaped leaves. Broad shrub or hedge plant, with evergreen boxwood-like foliage and black berries. 12 to 15 in., \$4.25 each.
- Crenata Hetzi.** 5 to 6 ft. Large convex foliage of glossy green, resistant to spider. Hardy. Grows fast, broader than tall. 12 to 15 in., \$4.75 each.
- Rotundifolia.** 8 ft. Deep green color; round leaves. Very popular and useful for foundation and hedge work. 12 to 15 in., \$4.00 each. 15 to 18 in., \$5.50.
- MAHONIA Bealei.** Evergreen; glossy leaves. Yellow flowers in May. Blue-black berries. Likes partial shade. 12 to 15 in., \$5.00 each.
- PIERIS japonica.** Evergreen. Clusters of small drooping white flowers in May. 15 to 18 in., \$5.00 each.
- PYRACANTHA** (Firethorn). Valued for their profuse clusters of brilliant orange berries all fall and winter. 15 to 18 in., \$3.50 each. 18 to 24 in., \$4.50.
- HYBRID RHODODENDRON, Named Varieties.** Crimson, lavender to pink, red and rosy lilac. 15 to 18 in., \$8.95 each. 22 to 26 in., \$11.95.

All flowering shrubs and evergreens are balled and burlapped. Our plants are good heavy stock. Free delivery in Washington and the suburban area; no shipments made outside this area. Residents of D. C. and Md. are requested to include the 3% sales tax with their remittance. We cannot mail items on this page.

ORNAMENTAL AND SHADE TREES

- ASH, Mountain.** Red berries. Dark green foliage. Does well in average soil. 5 to 6 ft., \$4.00 each.
- CHERRY, Flowering.** Double pink flowers in spring. 3 to 4 ft., \$7.50 each.
- CRAB, Flowering.** Grows 15 to 20 ft. Red, pink, and white showy masses of bloom in early spring. Easy to grow. 4 to 5 ft., \$5.00 each. 5 to 6 ft., \$7.50.
- GINKGO BILOBA** (Maidenhair-tree). Fan-shaped green leaves in summer, turning golden yellow in fall. 5 to 6 ft., \$10.00 each.
- MAGNOLIA Soulanganea** (Saucer Magnolia). A hardy Chinese species with beautiful cup-shaped flowers 3 to 5 inches in diameter, white inside, flushed with pink outside. 2 to 3 ft., \$6.50 each. 3 to 4 ft., \$8.00.
- Soulanganea nigra.** Grows 15 to 18 ft. Many purple flowers in early June. Fast grower. 2 to 3 ft., \$6.50 each. 3 to 4 ft., \$8.50.

Fruits

Big 4 to 5-ft. trees

APPLE TREES
2-yr.-old, \$3.25 each

Winter Varieties
Red Delicious. Red; fine grained.
Stayman (Imp. Winesap). Large.
Yellow Delicious. Golden yellow.

Autumn Varieties
Grimes Golden. Good size; yellow.

Summer Varieties
Yellow Transparent. Large yellow.
Summer Rambo. Large striped, greenish yellow background.

CHERRY TREES
2-yr.-old, \$3.75 each

Montmorency. Sour. Bears late of June.
Napoleon. Large; sweet. Midseason.
Tartarian. Large; sweet; black. June.
Windsor. Large; black. Good for pollination.

PEACH TREES
2-yr.-old, \$3.25 each

Belle of Georgia. Freestone; white flesh.
Elberta. Large; yellow flesh. Freestone.
J. H. Hale. Golden yellow freestone.
Redhaven. Yellow freestone. Smooth, almost fuzzless. Strong grower.

PEAR TREES
2-yr.-old, \$3.25 each

Bartlett. The best large eating Pear.
Seckel. Small; sweet. Very popular.

PLUM TREES
2-yr.-old, \$3.25 each

Abundance. The popular early cherry-red.
Burbank. A well-known dark red.
Danson (Blue Shropshire).
Stanley. Blue. Prune type.

GRAPE-VINES
2-yr.-old

Brighton. Early dark red.
Concord. The standard black.
Niagara. White.

All Grape-Vines 75c. each

SUPERB HARDY APRICOT. 4 to 6 ft., \$3.25 each.
BLACK RASPBERRY PLANTS. 1-yr., No. 1 plants.
Cumberland. \$2.25 for 5; \$4.00 for 10; \$9.00 for 25.

HEDGE PLANTS

PRIVET, California. Dark green foliage which remains on the plant until mid-winter. Well-branched heavy stock. 1½ to 2 ft., \$3.50 for 10; \$3.00 for 100.

Lucidum (Evergreen Privet). Compact plant with glossy green leaves and blue berries. 12 to 15 in., \$2.50 each; 15 to 18 in., \$3.50.

15



Bolgiano's
**CAPITOL PARK
 LAWN GRASS
 SEED "The
 Nation's Pride!"**

Truly a top-grade lawn mixture for sunny areas, containing a well-balanced blend of the best quality Kentucky Blue Grass and Creeping Red Fescue. Capitol Park Lawn Seed is the result of our 75 years' experience. It provides deep-rooted, fine-bladed grasses which are so necessary for a beautiful year-round turf.

PRICES:

- Lb. . . \$1.00
- 5 lbs. . . . 4.75
- 25 lbs. . . . 21.95
- 50 lbs. . . .39.95
- 100 lbs. . . .79.50

FALL IS THE TIME TO PLANT LAWN GRASSES

**BOLGIANO'S WHITE HOUSE
 SHADY LAWN GRASS SEED**

Washington is often called the "City of trees." Because of the shade they cast, these magnificent trees are frequently a cause of concern to home owners, but thanks to Bolgiano's White House Shady Lawn Grass Seed, a special blend of Poa Trivialis (Shady Blue Grass), Chewing's Fescue and Kentucky Blue Grass, you can enjoy a beautiful turf in shady spots which will match the turf of our Capitol Park Lawn Grass.

- Lb. \$1.00; 5 lbs. \$4.75; 25 lbs. \$21.95;
- 50 lbs. \$39.95

**BOLGIANO'S PERMA-GREEN
 LAWN GRASS SEED**

Another of our popular lawn grass seed mixtures is Perma-Green, an all-purpose blend of the finest Kentucky Blue, Merion Kentucky Blue and Pennlawn Creeping Red Fescue grasses. This blend is capable of producing a dense, velvety lawn resistant to dry summer weather.

- Lb. \$1.35; 5 lbs. \$6.50;
- 25 lbs. \$29.50;
- 50 lbs. \$56.50



ASK FOR BOLGIANO'S "HANDY GUIDE TO A BEAUTIFUL LAWN"



GOLD TAG TURF FOOD 6-12-4

The beautification of your home, no matter how well you may landscape it with artistic shrubbery, will depend on the attractiveness of your lawn. No lawn can ever develop its full beauty without proper feedings. Bolgiano's Gold Tag Turf Food is carefully formulated to provide complete feeding for lawns. It is non-acid-forming, and each bag has full directions for proper application. 80 lbs. \$3.25; 50 lbs. \$2.25; 25 lbs. \$1.45.

URA-FORM TURF FOOD 20-10-5

The amazing Turf Food with 55% of the nitrogen derived from du Pont's Uramite, insures long-lasting and steady growth and conditions the soil. *Twenty-five pounds will cover 5000 sq. ft.* and will not burn if used as directed. Each bag has complete directions. 25 lbs. \$3.95.



F. W. BOLGIANO & CO., Inc.

411 New York Ave., N. E.
 1220 H Street, N. W.
 WASHINGTON, D. C. 20002

LIBRARY
 U.S.D.A.
 D.C. 20251

BULK RATE

U. S. POSTAGE
PAID
 Washington, D. C.
 Permit No. 160



